

MEGATUGS

Salvage & Towage

2, Iroon
Polytechniou Street,
188 63 Piraeus,
Greece
T: +30 210 4522131
F: +30 210 4180176
W:

PLATYTERA



PARTICULARS

Vessel Type	Anchor Handling, Salvage Tug
IMO Number	9439278
Callsign	SVA7933
Port of Registry	Piraeus
Year Built	2007
Classification notations	Bureau Veritas Hull Mach, Tug, Oil Recovery Ship, FIFI I/Watespray, Unrestricted navigation

DETAILS

Length Overall	40 m
Breadth	11.8 m
GRT-NRT	499/149
Depth Moulded	4.6 m
Maximum draft	3.8 m
Clear deck Space	150 m ²
Deck loading	5 t/m ²
Max Speed	12 kn / 7 m ³
Economical speed	10 kn / 4.2 m ³
Bollard Pull	55.6 t
Sewage Plant	MARPOL compliant 20 persons
Rudders	Twin
Joystick	Not fitted

CAPACITY

Fuel Oil	368 m ³
Fresh Water	172 m ³
Foam	7.8 m ³
Detergent	9.3 m ³



2, Iroon
Polytechniou Street,
188 63 Piraeus,
Greece
T: +30 210 4522131
F: +30 210 4180176
W:

MACHINERY

Main Engines 2 x Caterpillar 3512B – 1936 BHP each
Generators 2 x Caterpillar 3406C – 307 BHP - 229 kW each
Bow Thruster 1 x 220 kW HRP 3001TT
Propulsion 2 x Fixed pitch

ACCOMMODATION

Berths 2x 1, 2x 2, 1x 4, 2x4
Total 18

FIRE FIGHTING

Class FIFI I
Monitors 2 x 1200 m³/hr
Pumps 1 x 2400 m³/hr

DECK EQUIPMENT

Towing Winch

Type Double drum waterfall
Pull 50 t
Wire Capacity 1000 m x 48 mm

Anchor Handling Winch

Type Plimsol double drum waterfall
Pull 50 t
Brake Holding 120 t
Wire Capacity 1000 m x 48 mm

Tugger Winch

Number & Capacity 2 x 5 t SWL
Wire Capacity 100 m x 26 mm

Other Deck Equipment

Towing Pins Plimsoll 100 t
Stern Roller Plimsoll 1.45 m x 3.5 m, 150 t SWL
Shark Jaws 100 t Strong Jaw, 78 mm
Deck crane 2T @ 6m Fixed Boom

LIFESAVING

Liferafts 4 x 18 man
Lifejackets 28
FRC/Rescue Boat/Davit Narwhal SV420
Lifebuoys 8

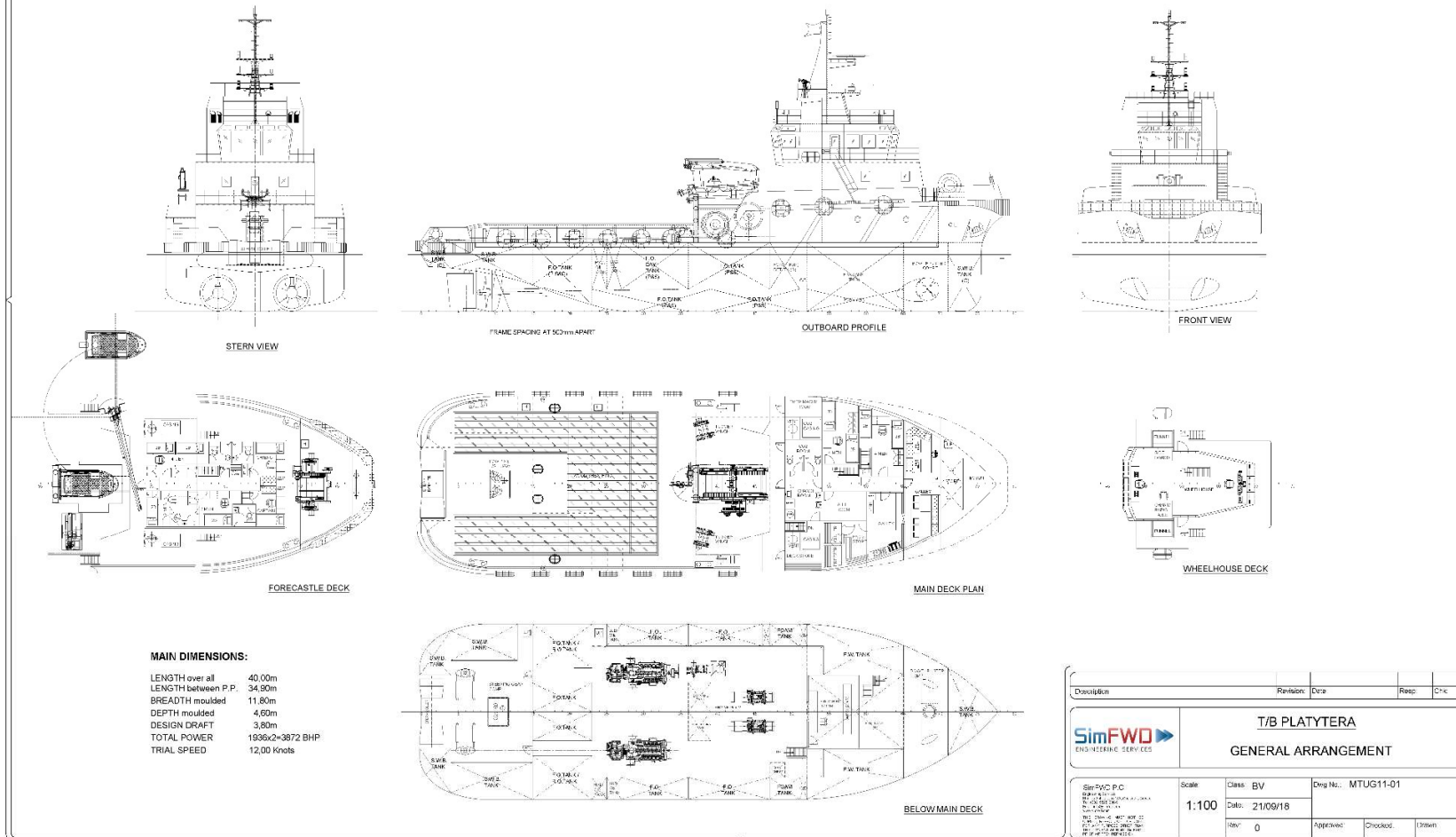
SPECIALIST

Rescue Zone Fitted

SALVAGE/ ANTIPOLLUTION

Oil Spill Response booms Yes
Salvage pumps Yes

GENERAL ARRANGEMENT



Particulars are believed to be correct but are not guaranteed. All figures given are approximate only. Owners reserve the right to amend the specifications without notification.